

Division of Child Development and Early Education

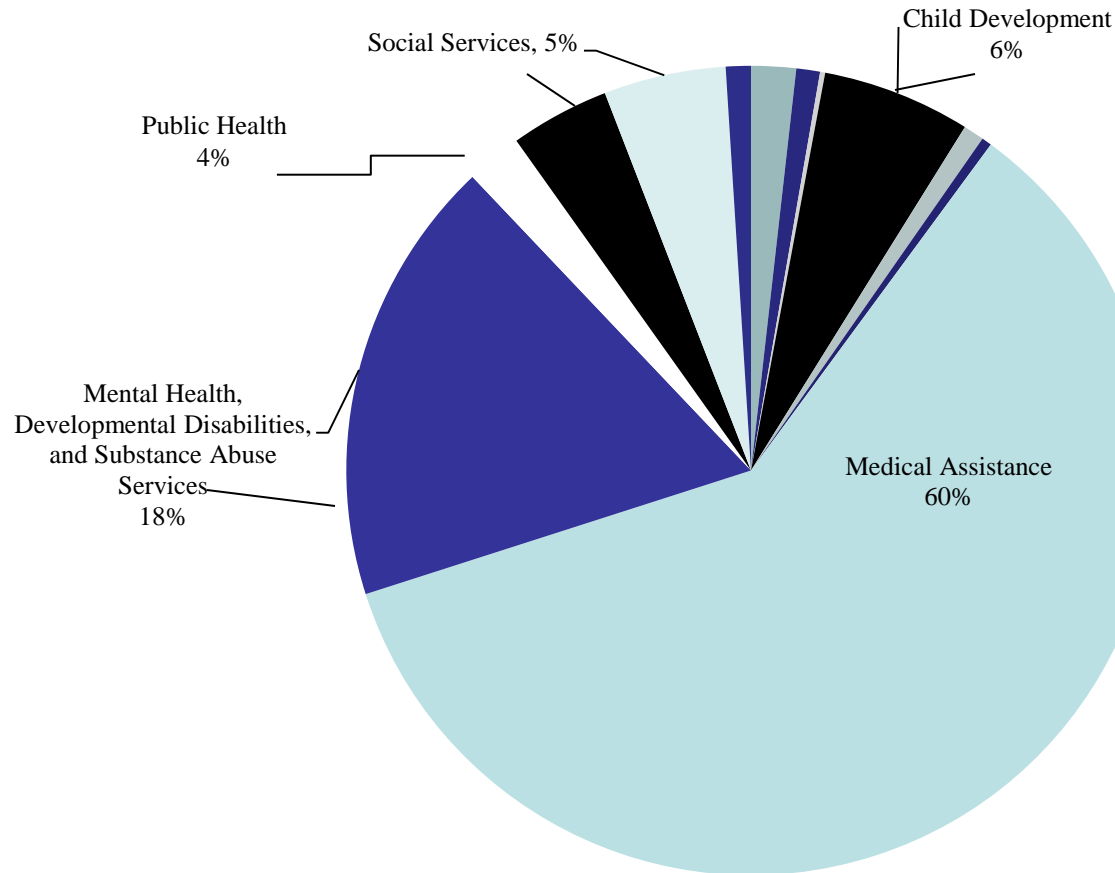
April 4, 2013

**Joint Appropriations Committee on
Health and Human Services**



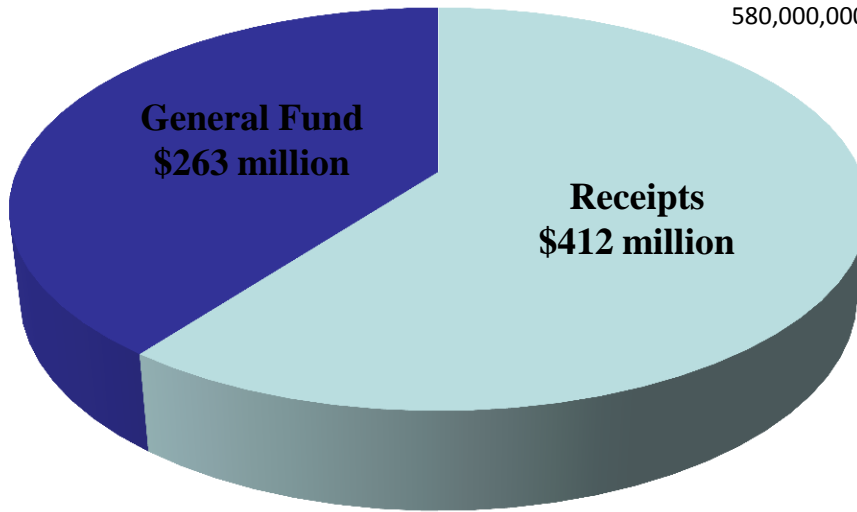
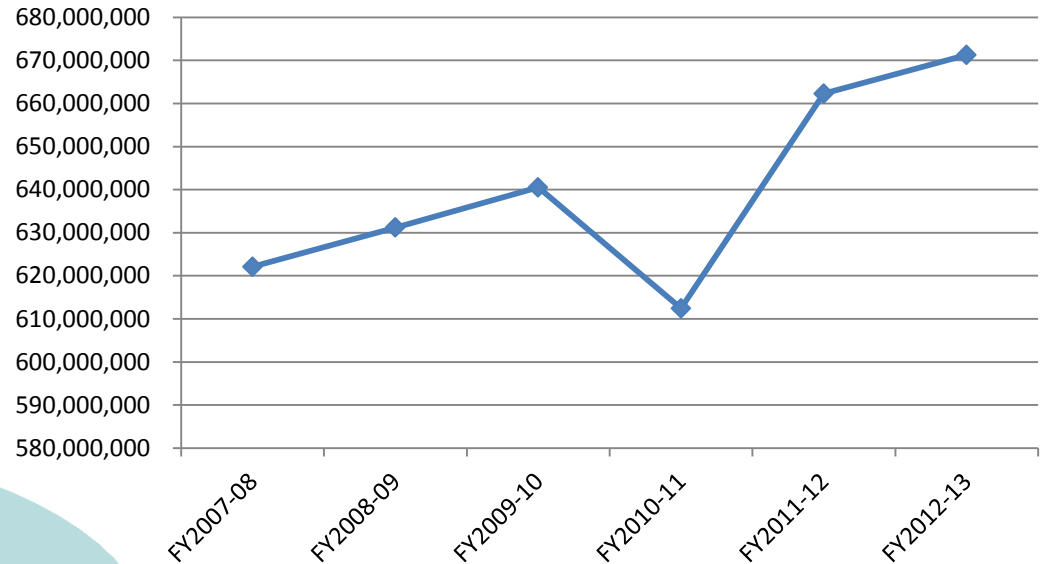
DHHS Budget Overview

General Fund \$4.6 billion



Division of Child Development BUDGET

- SFY 2012-13: \$675 million
 - \$412 million receipts
 - \$263 million State funds



Division of Child Development

PURPOSE

- Supports early childhood services, including:
 - Regulation and Licensure of child care centers and homes
 - 4,818 Centers
 - 2,830 Homes
 - Approximately 251,798 children in licensed care monthly (November 2012)
 - Administration of Child Care Subsidies
 - 74,961 Children Served

Division of Child Development

PURPOSE (continued)

- Early childhood initiatives
 - Smart Start
 - NC Pre-K

- Other
 - Criminal Background Checks for other agencies

Division of Child Development

RECENT BUDGET ACTIONS

2011-12

- **Pre-Kindergarten Funds Transfer** (\$65,011,651)
- **TANF Funding Swap** (\$6,352,644)
- **Smart Start Reduction** (\$37,600,000)
- **TEACH Program** (\$3,800,000)
- **Social Services Admin Funding** (\$3,195,581)
- **Post-Secondary Education Program** (\$7,052,797)

2012-13

- **Block Grant Funding - CCDF** (\$7,000,000)
- **Smart Start Initiatives** \$3,500,000*
- **TANF Funding Swap** (\$6,352,644)

***subject to stability of Medicaid budget**

Division of Child Development

MAJOR PROGRAMS

**CHILD CARE
SUBSIDY**

**NC
PRE-K**

**SMART
START**

SMART START

CHILD CARE SUBSIDY

NC PRE-K

Mission	School Readiness	Provide needs based child care funding	School readiness
Target Population	All Children in North Carolina from birth to age 5	Low income families with children ages< 12yrs; below 75% Median Income	At-risk four-year-olds who have not been exposed to a child care setting
Objectives	Planning and funding to: <ul style="list-style-type: none">• Improve access to child care• Improve the quality of child care• Improve access to health services for young children• Improve family support services	<ul style="list-style-type: none">• Enable parents to maintain or seek employment/training in order to support their family and achieve economic independence.• Provide for the protection, care and developmental experiences for children• Facilitate the reunification of families, aid families in crisis, and prevent foster care	Planning and funding to: <ul style="list-style-type: none">• Serve children who are not getting the educational preparation they need before starting school• Create a standard, statewide Pre-K program
Strategies	<ul style="list-style-type: none">• Provide technical assistance to child care centers to improve quality• Improve the quality of early childhood teachers• Provide parent education and resources• Provide access to health services for children	<ul style="list-style-type: none">• Provide access to high quality care• Subsidize child care for low income families• Enhance the availability of quality child care services• Provide child care to children receiving protective services.	<ul style="list-style-type: none">• Provide high quality Pre-K• Set uniform, state standards for Pre-K, including curriculum, teacher credentials and class size• Help Pre-K teachers improve credentials
Scope	<ul style="list-style-type: none">• Umbrella statewide initiative with broad range of activities operated on a county-wide basis	<ul style="list-style-type: none">• Statewide program available in 100 counties.	<ul style="list-style-type: none">• Targeted statewide program with narrow focus
Funding & Administration	<ul style="list-style-type: none">• Nonprofit organization at state and local levels• Public/private partnership• State and private funding• Local decision-making to address local needs	<ul style="list-style-type: none">• Combination of State and Federal funding from Block Grants and the General Fund.• Locally administered program with State level support	<ul style="list-style-type: none">• State program with state funding, plus other sources of funding contributed according to local decisions• Standard program; local decision-making about location of pre-k classrooms; all classrooms meet state standards

Child Care Subsidy

Began: 1964

Serves: 75,490 kids (March 2012)

Funding: 2012-13: \$348,321,539
2011-12: \$359,712,290

Sources: 80% Block Grants (CCDF & TANF)
20% State General Fund



Child Care Subsidy

Eligibility

- **Income eligible families earning less than 75% SMI**
- **Children who need child care services to support child welfare services.**
- **Children receiving foster care services who are in the custody of a county department of social services**
- **Requires a copay equal to 7-10% of gross income**



Child Care Subsidy

2012-13 Special Provisions

- **directs DCDEE to collect information on the program participation of subsidy applicants**
- **adjust subsidy distributions to minimize reductions due to formula changes**

Smart Start

Began: 1993

Serves: 100 Counties

Funding:

2012-13:	\$146 million
2011-12:	\$150 million
2010-11:	\$188 million



Smart Start

- **27 Member Board of Directors (10 GA appts.)**
- **77 Local Partnerships across NC**
- **Public-Private Partnership – Required to raise funding equal to 13% of State appropriation**
- **Mandatory 30% of funding for Child Care Subsidy & 70% of funding on direct services in local partnerships**



Smart Start

2012-13 Special Provisions

- **directs NC partnership to develop a salary schedule for Executive Directors of the local partnerships**
- **increase match for State funds from 10% to 13%**
- **appropriated funding for a literacy pilot and for assistance with fund raising**

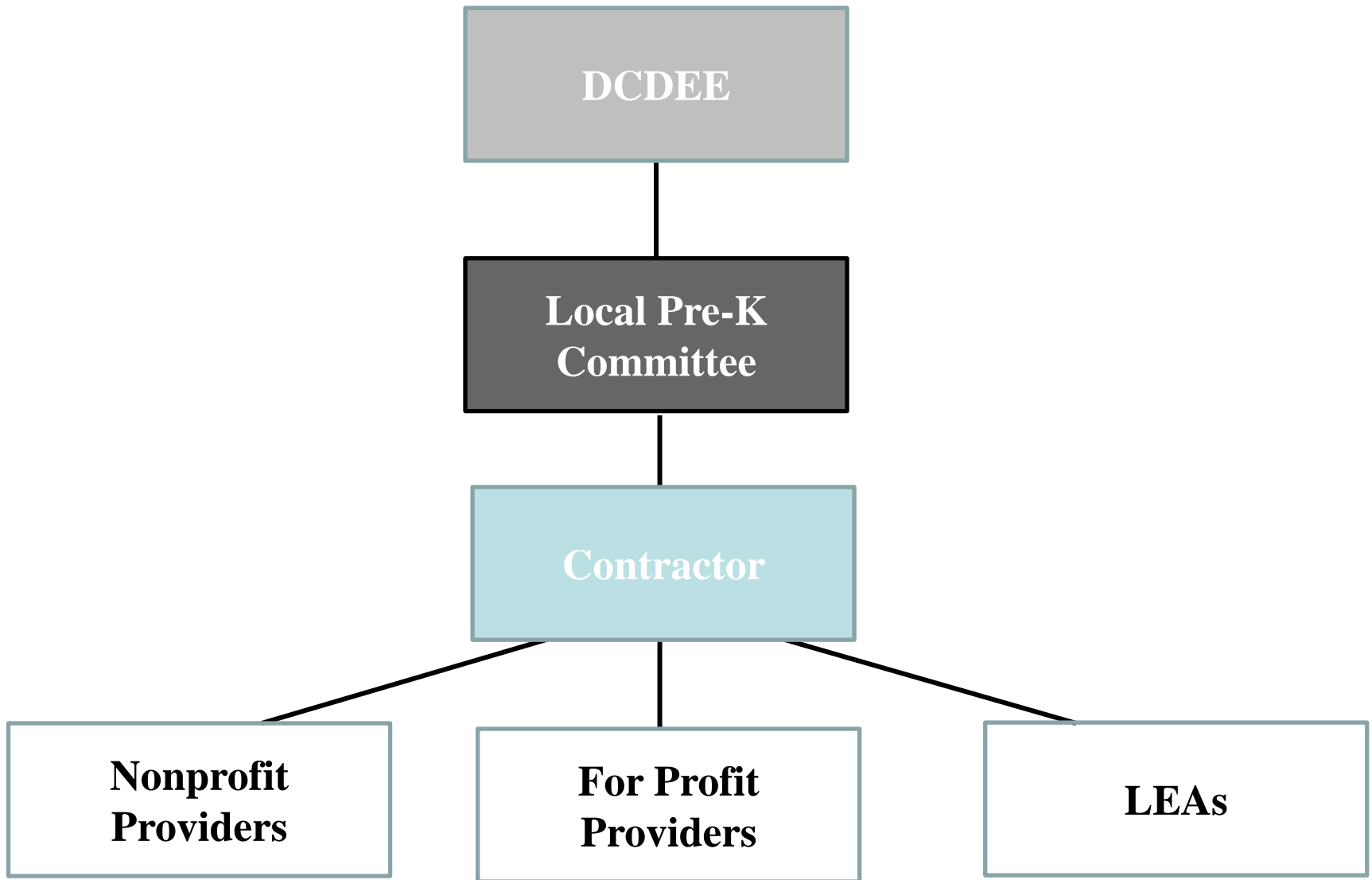
NC Pre-K

A voluntary Pre-Kindergarten program designed to prepare at-risk 4 year olds for school success.

- **High Quality Child Care Centers**
- **Approved academic focused curriculum**
- **Local Decision Making**
- **Leveraged funding**

More at Four

- **S.L. 2001-424 established More at 4 with an initial appropriation of \$6 million**
- **Target four-year-olds at risk of kindergarten failure**
- **Required the use of a proven curriculum**
- **Established standards for minimum teacher qualifications**



NC Pre-K

Began: 2011 (*More at 4 - 2001*)

Serves: 29,000 kids (*March 2012*)

Funding: 2012-13: \$131,970,705
2011-12: \$130,291,706
2010-11: \$160,647,360

Sources: 50% Lottery Funds
50% State General Fund



NC Pre-K

2011-12 Special Provisions

- **Transfer of More at 4 to DCDEE & renamed NC Pre-K**
- **Implemented a co-pay for Pre-K participation**
- **Standardize Pre-K service delivery hours**

NC Pre-K

2012-13 Special Provisions

- **Require NC Pre-K contractor to issue multiple-year contracts for private child care centers**
- **Creation of a pilot program funding Pre-K classrooms on a per classroom basis as opposed to slot funding**
- **Eliminates health issues as an eligibility factor (except for developmental or chronic health)**
- **Require data collection regarding program participation**